

MODEL:

SR42UBEIS

SmartRack® Rack Enclosure for Harsh Environments



42 Rack Units



3000 lb.
Load Rating



Toolless
Mounting Slots



Heavy-Duty
Industrial
Casters



Standard
19-inch
Rack Width



Dust, Drip & Splash
Protection



Louvered Doors
for Drip-Resistant
Ventilation



12 Fans for Superior
Airflow

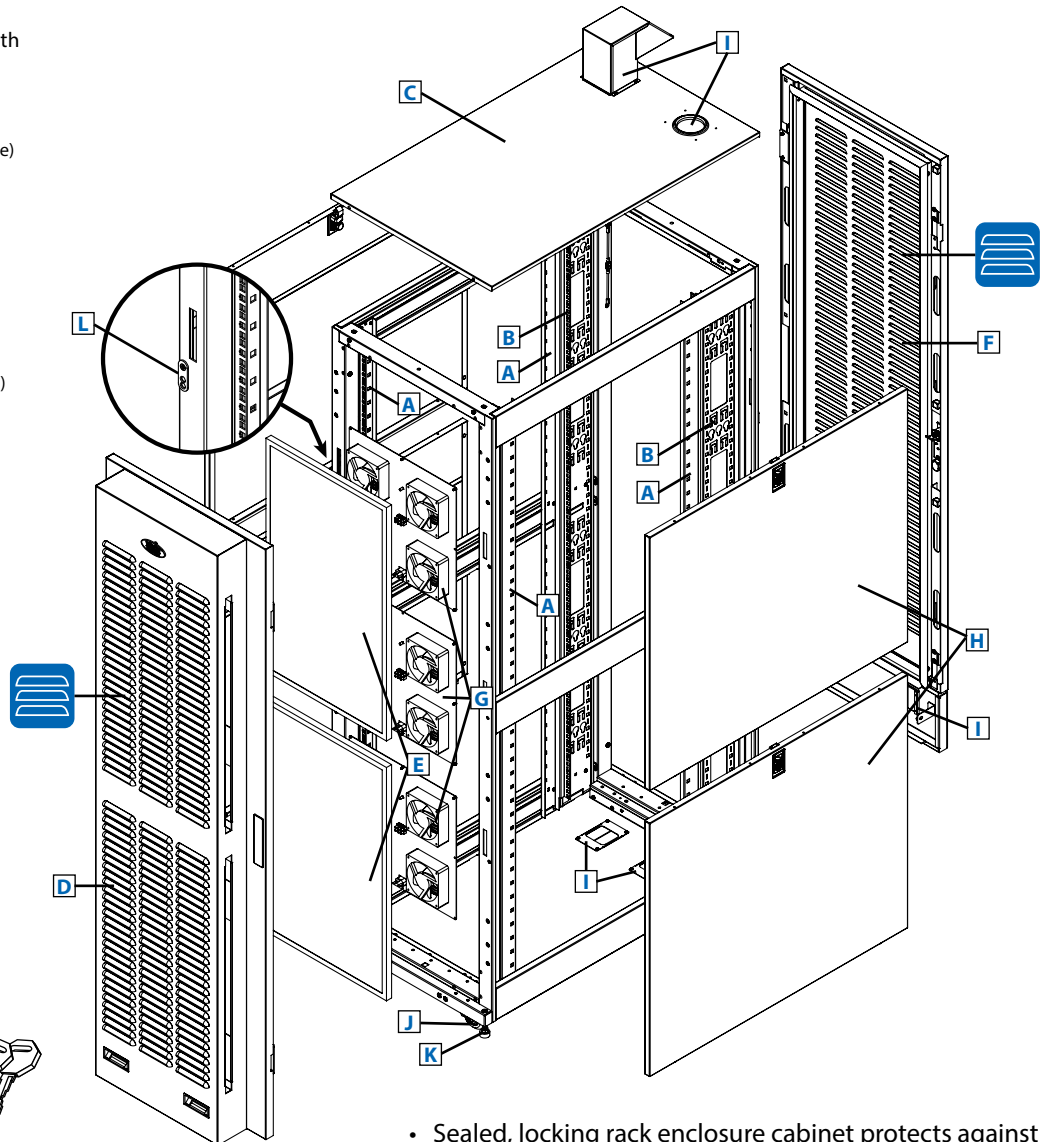


Replaceable
Dust Filters

- A** Adjustable Equipment Mounting Rails with Depth Index (4, Square Mounting Holes)
- B** Adjustable PDU Mounting Rails with Toolless Mounting Slots (2)
- C** Drip/Dust-Resistant Roof Panel (Removable)
- D** Front Door with Dust-Resistant Gasket (Louvered/Lockable/Removable)
- E** Off-the-Shelf Dust Filters (Replaceable)
- F** Rear Door with Dust-Resistant Gasket (Louvered/Lockable/Removable)
- G** High-Performance Ventilation Fans (12)
- H** Side Panels (4, Lockable/Removable)
- I** Drip/Dust-Resistant Cable Access Ports (6)
- J** Heavy-Duty Industrial Casters (4)
- K** Heavy-Duty Levelers (4)
- L** Integrated Bypass Tabs (2)
- M** Keys (For doors and side panels.)

Also Includes: Owner's manual, fan power cords (3) and rackmount equipment mounting hardware (50 cage nuts, 50 mounting screws, 50 nylon cup washers).

Also Available: Shock pallet model (SR42UBEISSP1) supports equipment pre-installation and reshipment to final site. Reinforced shock pallet holds up to 1250 lb (567 kg), including the weight of the enclosure and pre-installed equipment.



- Sealed, locking rack enclosure cabinet protects against dust, falling dirt, drips and splashes.

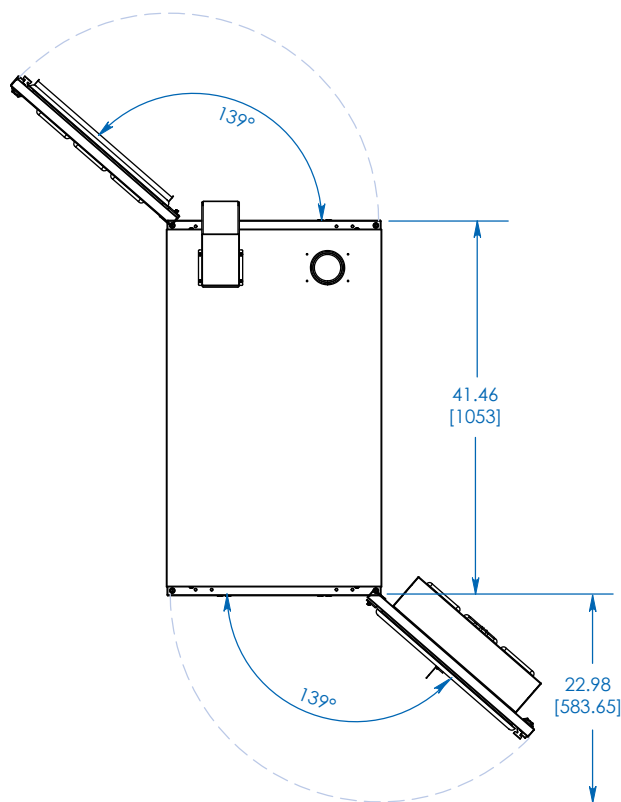
SEE NEXT PAGE FOR DETAILED UNIT MEASUREMENTS

Specifications

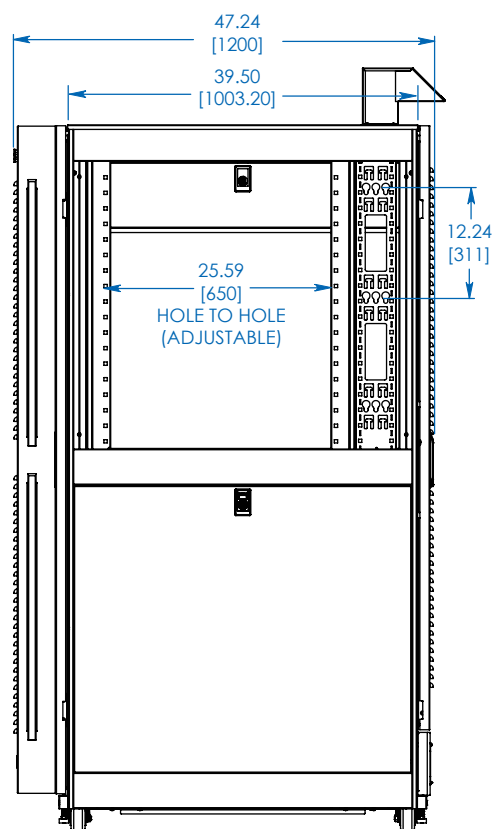
Model	SR42UBEIS
Rack Spaces	42U
Stationary Load Rating	3000 lb. / 1361 kg
Rolling Load Rating	3000 lb. / 1361 kg
Unit Dimensions (H x W x D)	79.82 x 23.63 x 47.25 in. / 2027 x 600 x 1200 mm
Shipping Dimensions (H x W x D)	86.5 x 26 x 49 in. / 2197 x 660 x 1245 mm
Unit Weight	390 lb. / 176.9 kg
Shipping Weight	432 lb. / 196 kg
Standards	EIA/ECA-310-E, Meets IP20 (NEMA 1), GOST, RoHS



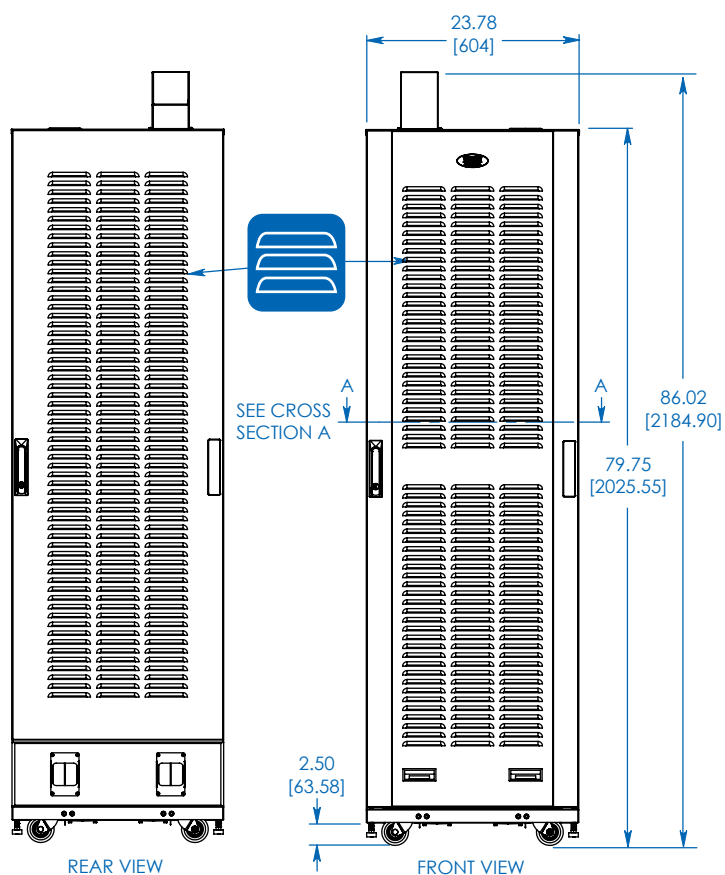
1111 W. 35th Street
Chicago, IL 60609 USA
773.869.1234
tripplite.com



TOP VIEW

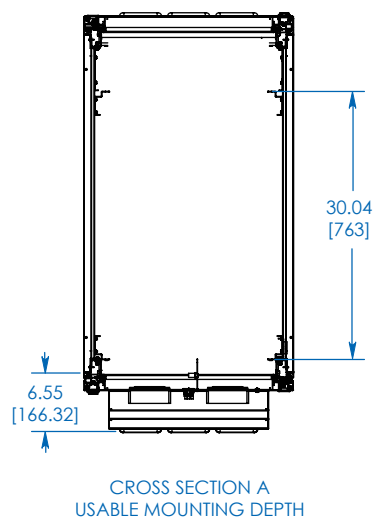


SIDE VIEW



REAR VIEW

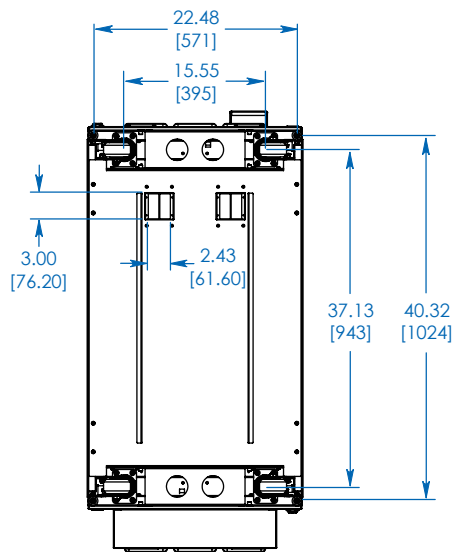
FRONT VIEW



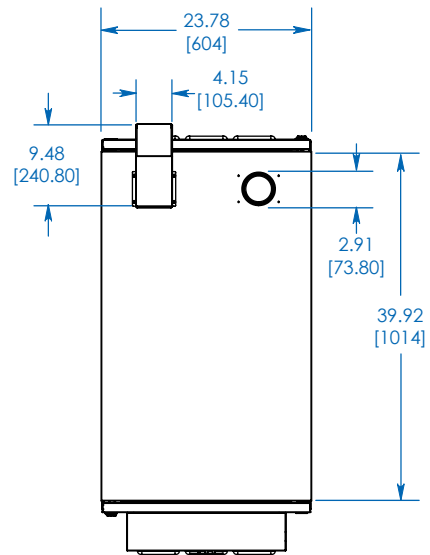
CROSS SECTION A
USABLE MOUNTING DEPTH

Dimensions: INCHES [mm]

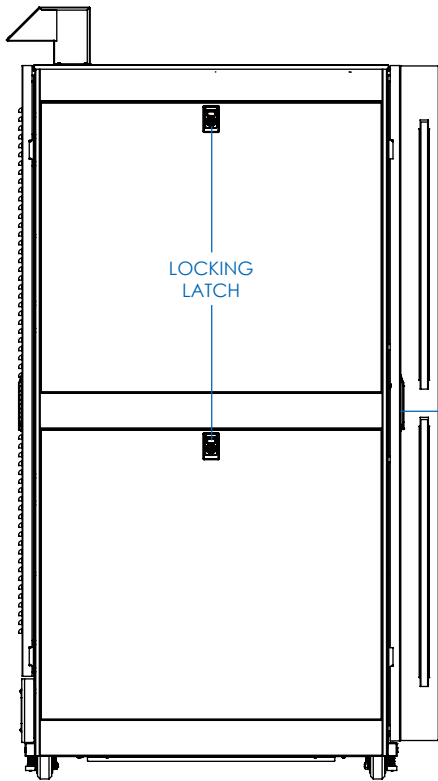
MODEL:
SR42UBEIS
TRIPP-LITE



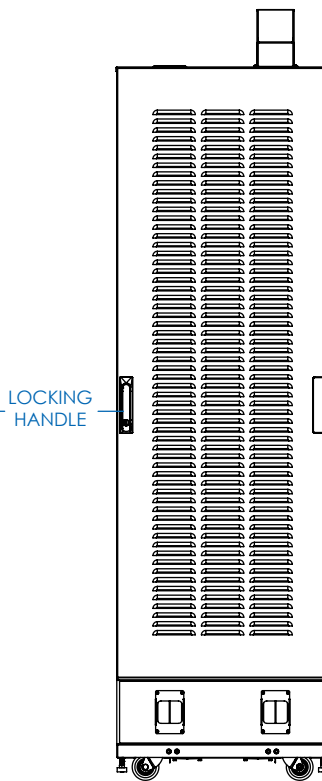
BOTTOM VIEW



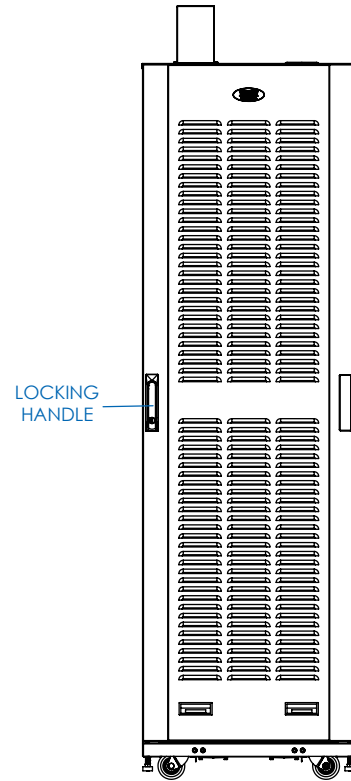
TOP VIEW



SIDE VIEW



REAR VIEW



FRONT VIEW

Dimensions: INCHES [mm]

Tripp Lite has a policy of continuous improvement. Specifications are subject to change without notice.
Photos and illustrations may differ slightly from actual products.

MODEL:
SR42UBEIS
TRIPP·LITE

1111 W. 35th Street
Chicago, IL 60609 USA
773.869.1234
tripplite.com